

NY Penn Station to Port Jervis via NJ Transit/Metro North Train

Between 3:47 pm and 7:43 pm eight trains leave NYC Penn Station to Port Jervis. The 80 min train ride will cost approximately \$24. Then take an approximately 20 minute / \$25 + tip taxi ride to camp. A total of around \$50 and 2 ½ - 3 Hours (Pending taxi wait time and transfers).

Note:

1. Times and pricing are slightly different for the same train pending what website you look at between NJTransit and Metro North.
2. Take any train to Secaucus Junction. Then transfer to the train going to Port Jervis from there. There might be another transfer in Suffern pending which train you catch out of Secaucus Junction.

Cost of travel from NYC Penn station to Port Jervis, NY

- MTA Metro-North: One Fare: \$21.75 / Off-Peak Round Trip: \$34 / Senior One-Way \$10.75 (Port Jervis & Pascack Valley Lines)
- NJ Transit \$23.25 / One Way Reduced is \$11.35 (Main-Bergen County Line)
 - One-Way Reduced Tickets (half fare or less) are always valid for senior citizens, passengers with disabilities, as well as military personnel and their dependents.

Note: Pricing as of January 2019. Price may change

Schedule

<https://www.njtransit.com/pdf/rail/R0020.pdf>

http://web.mta.info/mnr/html/planning/schedules/pdf/woh_sched.pdf

CONFIRM ALL TIMES WITH CURRENT SCHEDULE. THIS DOCUMENT WAS CREATED IN JANUARY 2019.

[Google Map](#)

NYC Penn Station > Port Jervis, NY via Secaucus Junction Weekdays via NJ Transit/ Metro-North (Weekday Schedule)

- 3:47 pm >6:14 pm (off-peak)
- 4:33 pm >6:55 pm (peak)
- 5:03 pm >7:23 pm (peak)
- 5:33 pm >7:55 pm (peak)
- 6:03 pm > 8:20 pm (peak)
- 6:20 pm >8:36 pm (peak)
- 7:00 pm >9:07 pm (peak)
- 7:43 pm >10:07 pm (off-peak)

Port Jervis > New York via Secaucus Junction on Weekends via NJ Transit/Metro North (Weekend/ Holiday Schedule)

- 7:24 am > 9:43 am
- 8:44 am > 11:31 pm
- 10:44 am > 1:33 pm
- 3:05 pm > 5:43 pm
- 5:27 pm >7:48 pm

Bicycles

You may bring your bicycle on the train. Generally, bicycles may be brought on off-peak trains only, subject to limits on the number of bicycles on the train. Bicycles are not permitted on inbound AM peak trains and outbound PM peak trains, any train with the **or** symbol, or on holidays as indicated in the bicycle regulations. For full rules and regulations, please visit www.njtransit.com/bikesontrains.

Cost of travel from Port Jervis Train Station to/from Camp

Uber

- UberX \$19.39
- UberXL \$29.66
- Premium: \$32.13
- Premium SUV \$41.97

Lyft

- Personal Ride: \$18-\$21
- Supersized Ride: \$28-\$32
- High-End Ride: \$32-\$36

J L Dispatching Taxi Service - \$25 one way

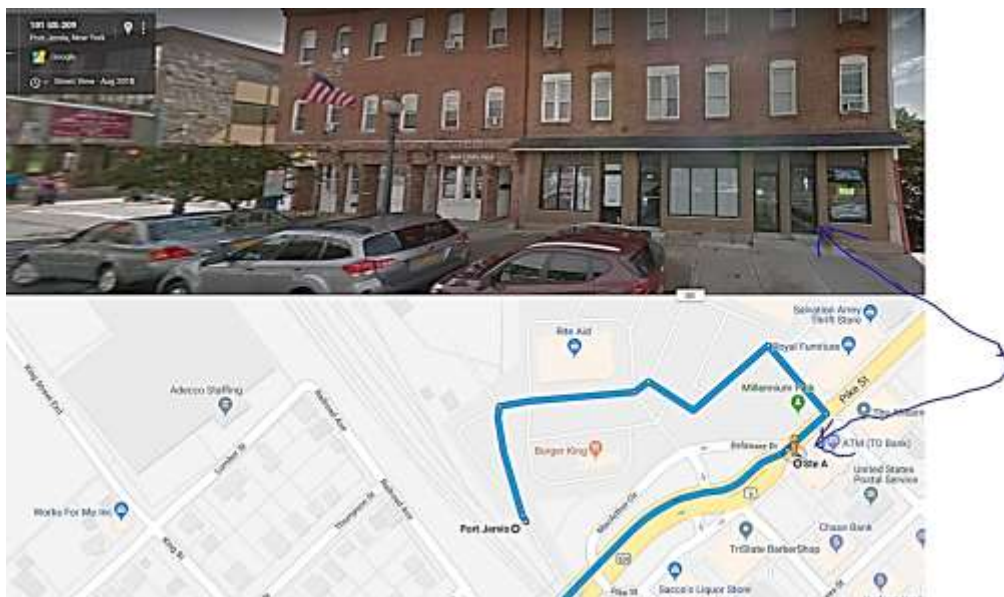
- (845) 856-3544
- 99 Pike St Ste A, Port Jervis, NY 12771
- **READ THIS BEFORE BOOKING:** <https://www.yelp.com/biz/j-l-dispatching-taxi-service-port-jervis>

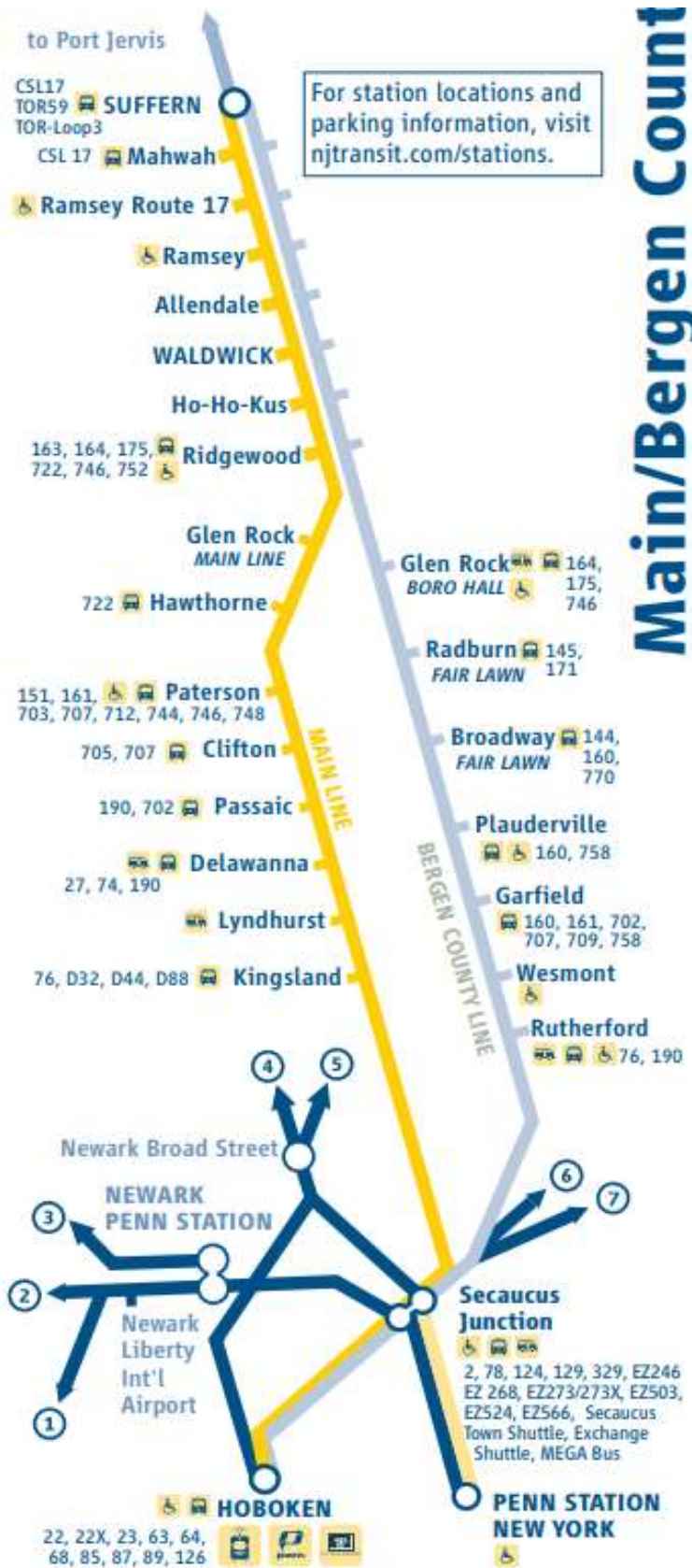
Pike County Taxi

- 570-828-2222 or 570-686-9300 / fax: 570-828-2333
- <http://pikecountytaxi.com/>
- 1484 route 739, suite 3, Dingmans Ferry, PA 18328
- rocco@pikecountytaxi.com

Directions from Port Jervis Train Station to Cedar Lake Camp (570 Sawkill Rd, Milford, PA 18337):
<https://goo.gl/maps/26Z1Bjnzg1L2> / 17-20 Min / 12 miles

Picture walking directions from Train Station to the Taxi Office in Port Jervis:





Main/Bergen Count



PORT JERVIS

- Port Jervis
- Otisville
- Middletown/
Town of Walkill
- Campbell Hall
- Salisbury Mills/
Cornwall

PASCACK VALLEY

- Harriman
- Tuxedo
- Sloatsburg
- Suffern
- Spring Valley
- Nanuet
- Pearl River

- Secaucus Junction
- New York Penn Station

- Hoboken Terminal
 - 41st Street (8th Ave.)
 - 33rd Street (6th Ave.)
World Trade Center
 - World Financial Center
- #126 Bus
PATH
NY Waterway

Visit our website at www.mta.info