

<b>Day:</b> Saturday	<b>Start Time:</b> 9:00 am	<b>End Time:</b> 2:00 pm
<b>Co-Leader:</b> Steven Umansky	<b>Co-Leader:</b> Anna Chapman	<b>Limit:</b> 15 people
<b>Transportation:</b> Van C	<b>Driver:</b> Anna Chapman	<b>Radios:</b> 2 / <b>First Aid Kit:</b> 1
<b>Fees:</b> none	<b>Travel Distance:</b> 7 Miles One-Way	<b>Travel Time:</b> 10 Min one-way

## Moderate Eight-Mile Shohola Falls and Marsh Reservoir Birding Hike

Start our hike viewing the Shohola Falls from three sides. The constant flow of water travels is an impressive waterfall that is roughly 75 feet wide and 50 feet tall. Shohola Falls is incredibly powerful and beautiful. The sheer amount of water that flows over this waterfall, even when others in the area are low, is very impressive.



We will then explore parts of the State Game Area surrounding the Shohola Marsh Reservoir enjoying views of the lake and the surrounding habitat filled with an aviary of all types. The eight-mile hike has some ups and downs totaling under 500 Ft. elevation gain.

Shohola Marsh Reservoir has been designated as a [Pennsylvania Important Bird Area](#) by Audubon Pennsylvania. Although managed for waterfowl, this game land provides habitat for many wildlife species. A variety of shorebirds stop to forage the marshy areas and shoreline during spring and fall migrations. The wetlands are thick with alders, sedges, rushes and buttonbush, valuable food and cover plants for migrating and nesting birds.

When Shohola Creek was dammed many years ago and the lake formed, low-lying stands of timber were flooded. The impounded water left standing dead trees; many birds utilize the decaying trees. Cavity nesters, such as the wood duck, hooded merganser, eastern screech-owl, northern (yellow-shafted) flicker, and hairy and downy woodpeckers' nest in such trees. Great blue herons, green herons, waterfowl and osprey also perch on snags.

- Bring Standard Hiking Gear: Snack, Water, Hat, Decent Hiking Shoes, sun lotion
- Pack lunch during breakfast, but you may eat it back in camp or at the end of the hike
- [Google Maps of variation of hike](#) / [YouTube of Falls](#)
- 7 Miles / 10 Min from Camp
- 9:00 am ~ 2:00 pm
- Cost: None

### Logistics:

- 9:00 am Depart from Cedar Lake Camp
- 9:00 am – 9:15 am Travel from Cedar Lake Camp to Shohola Falls and Dam parking lot
- 9:15 am – 9:30 am Gear-up and Round Table Talk
- 9:30 am – 1:30 pm Hike Shohola Falls and Marsh Reservoir
- 1:30 pm – 1:45 pm Return to Camp

**ABOUT THE PARK:**

[Shohola Recreation Area](#) - Discover Pike PA

**DIRECTIONS:** [Google Map to Trail Head](#)

GPS Coordinates 41.390598, -74.969041



Although there are many parking lots, this one was open on a Sunday in winter when others were gated. Trails for the falls are accessed directly from this parking lot.

**TRAIL MAPS:**

Trails are not marked or maintained. Expect to have to maneuver through some blowdowns. Even though maps show trail names, no signs exist with these names. The trails along the falls are not shown on the maps, and several paths branch off. It is obvious where to go once there and hard to get lost since the lake is always nearby and makes a great reference point.

[State Game Lands 180](#) - Pike County, PA

[State Game Lands 180](#) - Pennsylvania Game Commission

**HIKE DISTANCE:**

Shohola Falls - Overlook Tower - Chucks Trail and Horseshoe Trail: 8 miles

**THE HIKE: From [Gone Hikin' Website](#)**

For orientation purposes:

Heading west, turn left before the Route 6 bridge towards Shohola Falls Inn (A) to the paved parking lot; Come out from the falls/gorge trail in the small gravel lot (b); Cross to the other side of Shohola Creek via the Route 6 bridge (c)



From the parking lot, facing the dam, take the trail at the right corner of the lot where my dog is to get to the lower falls



Descend on a series of wooden steps.



Shohola Falls after descending steps.



Retrace from this point back to the parking lot. (From what I read; the icy section is slippery even when there is no ice, but the trail does not continue the other side, so you must go back to get to the upper level.



Back at the parking lot, walk a few steps along the left side (with your back to the dam) and look for paths going into the woods that will run parallel to Shohola Creek up above the gorge.



A view of the lower-level steps from the upper-level trail.

The trail will follow on a ledge with a steep drop down into the gorge through a beautiful hemlock forest.



JOE 2019 Information Packet for **Moderate Eight-Mile Shohola Falls and Marsh Reservoir Birding Hike**

Come out into a small gravel parking area, walk around the guardrail and turn left to cross over Shohola Creek on the Route 6 bridge.



A view of the gorge from the Route 6 bridge.

Keep walking along Route 6 a short distance to the end of the guardrail and turn left. You might see faint paths in this area, but if not, it's a short distance before coming out on a wide grassy clearing with an overlook to the left. On your way to the overlook, note where to access the trail for the other side of the falls on your way:



The overlook is at the split rail fencing to the far left, and my dog is sitting at the entrance of the trail which is about halfway between the overlook and the utility pole. A blowdown obstructs it. I broke away as many branches as I could to make it a little more obvious.



The trail will follow a fence along the other side of the gorge heading upstream back towards the falls and dam.



Another series of steps lead to a stone-walled overlook at the other side of the falls.



Beyond the dam trails, the service road and woods roads lead to an observation deck.



View from the observation deck



JOE 2019 Information Packet for **Moderate Eight-Mile Shohola Falls and Marsh Reservoir Birding Hike**

Entrance to Chucks Trail (not marked) from the gravel service road.



The named paths on the maps which are not signed by name in the game lands are grassy woods road, sometimes very swampy.



A nice view of Shohola Lake and the countryside is descending on the Horseshoe Trail.



Return to the parking lot by crossing the bridge on Route 6, turn right into the gravel parking lot, then accessing the trail at the left side of the fence.

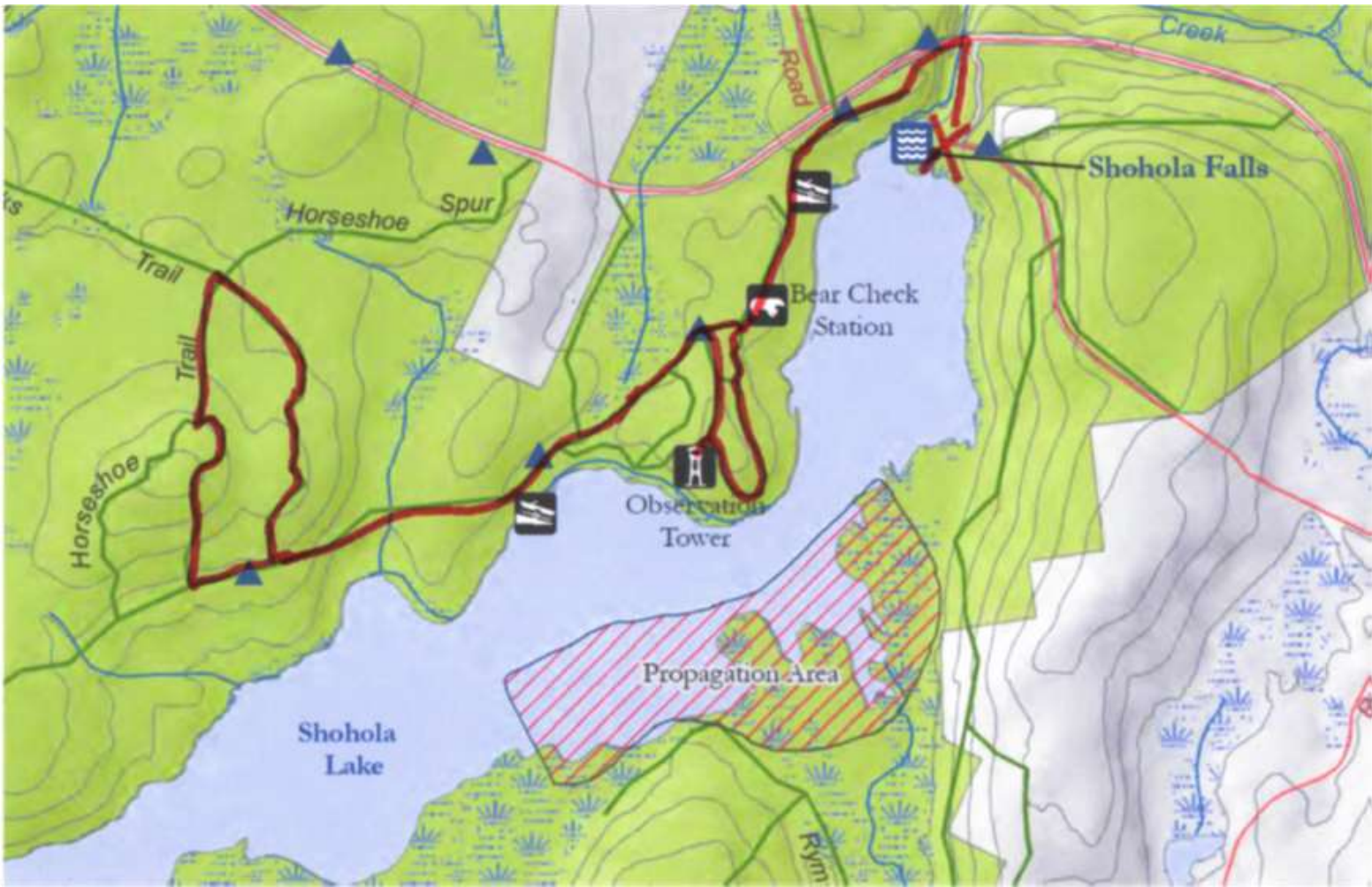
Follow the trail along the upper rim of the gorge through the hemlock forest.



Shohola Falls from the upper trail.



JOE 2019 Information Packet for Moderate Eight-Mile Shohola Falls and Marsh Reservoir Birding Hike



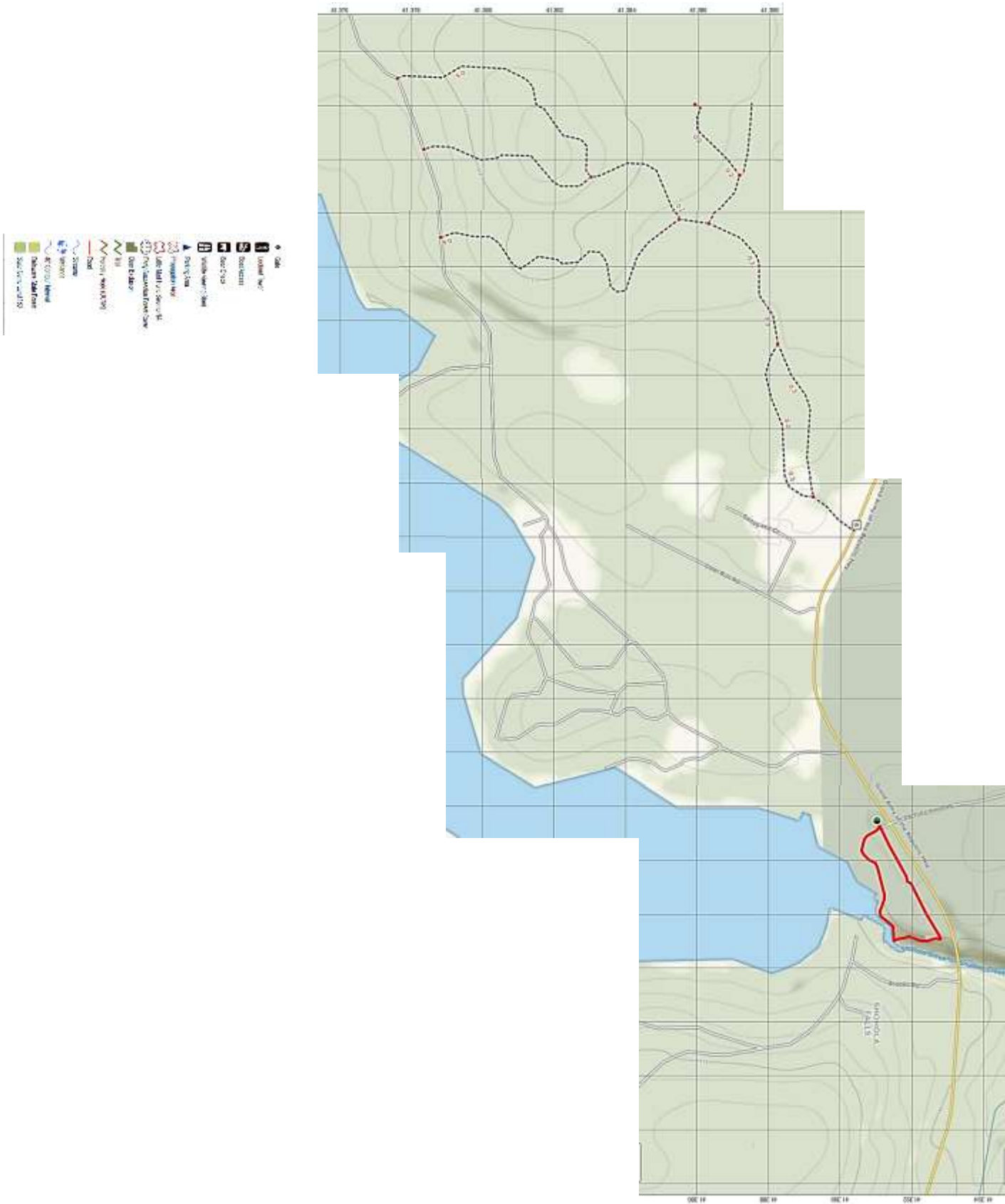


## JOE 2019 Information Packet for **Moderate Eight-Mile Shohola Falls and Marsh Reservoir Birding Hike**

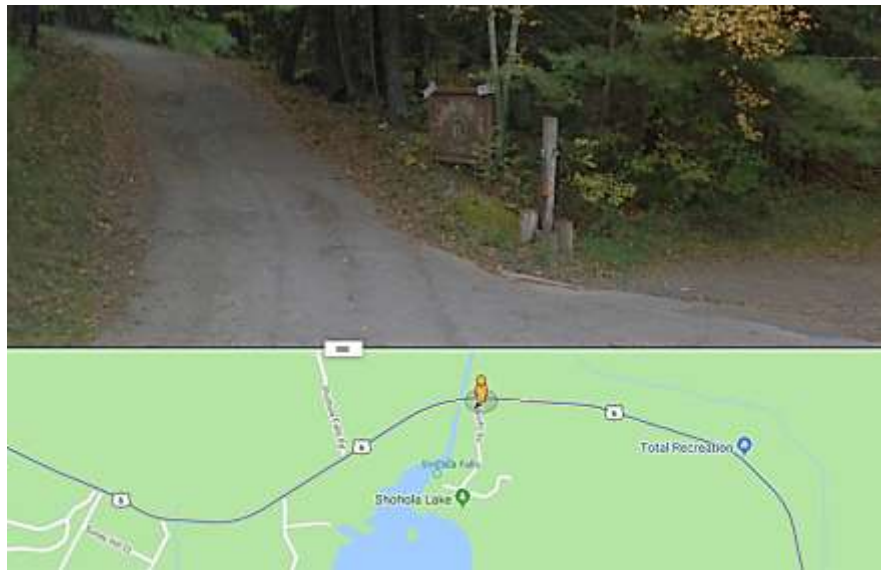
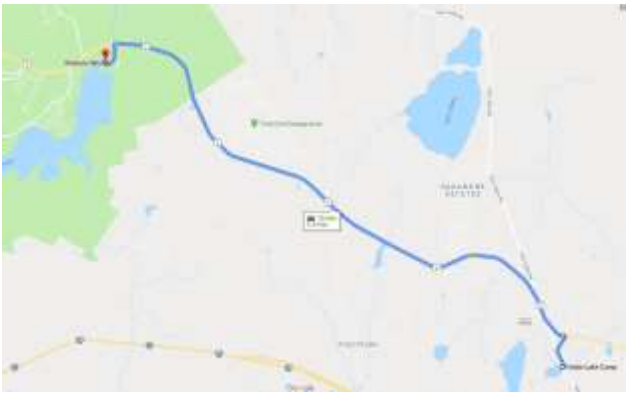
### **HIKE SUMMARY:**

- [ 0.00] Take the trail from the right corner of the parking lot facing the dam; descend step to the bottom of falls, at the end of trail retrace back to the parking lot. Take path into woods from the parking lot to left and follow the upper trail along the ridge above gorge through a hemlock forest
- [ 0.35] Trail ends at the gravel parking lot, turn right to end of a guardrail, turn left on Route 6 and cross over bridge continuing to end of the guardrail
- [ 0.50] Turn left at the end of the guardrail and continue briefly through woods to clearing then veer left to overlook at the fence; retrace a few steps and turn left on the path before utility pole
- [ 0.60] Keep to the right along fence and down steps to falls overlook
- [ 0.75] Falls overlook; retrace a few steps then go up steps to the left continuing towards dam; at dam veer right across the open area on a mowed path
- [ 1.00] At the paved parking lot, turn left and walk along the pavement
- [ 1.10] Turn left at picnic and trail sign opposite parking lot entrance on the right; at clearing turn right on the path into woods at "boating" sign
- [ 1.30] Turn left at T-intersection (right goes back to the paved road); at the paved boat ramp, turn right, proceed a few steps then turn left on the path into woods
- [ 1.50] Left at fork
- [ 1.75] Trail veers slightly away from the lake, come out at clearing behind yellow game commission building, continue right on gravel road passing the yellow building, at the gravel service road, turn left
- [ 2.20] Turn left at the woods road (Hill Trail on Game Commission map) - if you miss this, the next woods road has an "observation tower" sign, and you can turn left there also
- [ 2.40] Observation tower; descending tower steps, continue straight then turn left on the woods road; turn left at next woods road
- [ 2.65] Continue through clearing to gravel service road; turn left on a gravel road (turn right if only hiking out to observation tower)
- [ 2.80] Gravel parking lot on right and boat launch on the left (shown on map); continue on the gravel road through gates
- [ 3.20] Gravel road crosses the creek (shown on Pike County map, not game lands map)
- [ 3.45] At the top of the hill as gravel road levels out, turn right on grassy woods road (Chucks Trail on both maps)
- [ 3.85] Trail veers left and became somewhat more narrow
- [ 4.05] Turn left at T-intersection (Horseshoe Trail) (shown as the 4-way intersection on maps)
- [ 4.30] At next T-intersection turn left; as the trail descends view of Shohola Lake ahead
- [ 4.70] Turn left on the gravel service road
- [ 4.80] Parking lot on the right (shown on map)
- [ 4.85] Pass Chucks Trail on left
- [ 5.10] Gravel road crosses the creek
- [ 5.70] Continue through gates with a gravel parking lot on the left and boat launch on the right
- [ 6.10] Straight on a gravel road at observation trail sign on the right
- [ 6.70] Continue as gravel road becomes paved at yellow building on the right
- [ 6.95] Turn right on a paved road at Shohola Falls sign
- [ 7.00] As pavement widens into parking lot watch on left for the trail into woods; turn left and follow the trail through picnic tables - trail branches off, keep along the contour of the lake
- [ 7.30] Continue right around the dam on mowed grass path towards falls trails
- [ 7.45] Falls overlook; turn around and go up steps to the right
- [ 7.60] Go through clearing then through woods briefly towards guardrail and turn right on Route 6 and cross bridge; turn right at another end of guardrail then right again into the gravel parking lot; take the trail to left of wooden fence along hemlock gorge
- [ 8.00] Back at the parking lot

## JOE 2019 Information Packet for Moderate Eight-Mile Shohola Falls and Marsh Reservoir Birding Hike



JOE 2019 Information Packet for **Moderate Eight-Mile Shohola Falls and Marsh Reservoir Birding Hike**



10MIN / 6.3MI

Start: Cedar Lake Camp, 570 Sawkill Rd, Milford, PA 18337

1. Head out of the camp driveway and turn left going northwest on Sawkill Rd toward Bridge Rd.
  - a. Then 0.21 miles 0.21 total miles
2. Take the 1st right onto Bridge Rd.
  - a. **DO NOT TRY TO TURN LEFT ONTO RT. 6 FROM SAWKILL ROAD.** This is a very dangerous intersection. Using the short detour onto Bridge Rd. is much safer.
  - b. Then 0.16 miles 0.37 total miles
3. Turn left onto US-6 W.
  - a. Then 0.00 miles 0.37 total miles
4. Take us-6W past Sawkill Rd. Continue to follow US-6 W.
  - a. Then 5.74 miles 6.11 total miles
5. Turn left onto Brooks Camp Rd.
  - a. If you cross over the bridge for Shohola Creek and reach Shohola Falls Rd you've gone about 0.3 miles too far
  - b. Then 0.23 miles 6.34 total miles
6. Go a 0.2 mile to the end of the road turn right towards the dam and falls
7. Park in the in either the upper or lower lot. The hike starts in the upper lot.

## Nearest Urgent Care:

### Lake Region Urgent Care

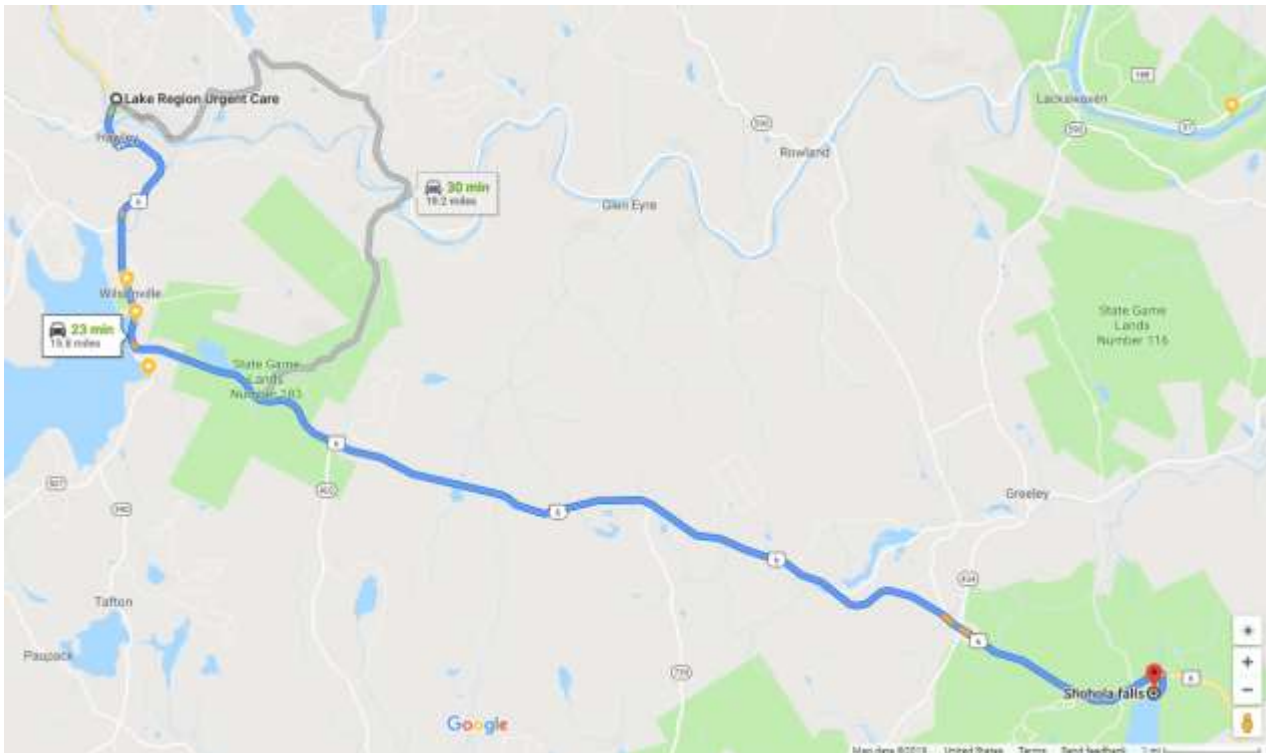
103 Spruce Street, Hawley, PA. 18428 across from the Settlers Inn. | 41.481824 - 75.1824 | (570) 390-4545

<http://www.lakeregionurgentcare.com>

16 Miles / 24 Min

#### Contacts:

- Carla Newman - Billing [carlanlruc@hancock.net](mailto:carlanlruc@hancock.net) (607) 637-5435
- James Panto, RN - Practice Manager [jpanto@lakeregionurgentcare.com](mailto:jpanto@lakeregionurgentcare.com) (570) 390-4545
- Roman Matlaga, DO - Medical Director (570) 390-4545



1. Go back out from Shohola Falls Parking to Rt. 6/US-6 W/US-6 E.
  - a. Then 0.23 miles 0.23 total miles
2. Turn left onto Route 6/US-6 W. Continue to follow US-6 W.
  - a. Then 15.01 miles 15.24 total miles
3. Turn right onto Main Ave/US-6 W/PA-590.
  - a. Settlers Inn will be on the corner on your right.
  - b. The building for Lake Region Urgent Care will be in front of you.
  - c. Main Ave is just past Penn Ave
  - d. Then 0.54 miles 15.78 total miles
4. Stay straight to go onto Spruce Ave.
  - a. Then 0.01 miles 15.79 total miles
5. Lake Region Urgent Care. 103 Spruce Street, Hawley, PA. 18428