

<b>Day:</b> Friday	<b>Start Time:</b> 8:30 am	<b>End Time:</b> 5:00 pm
<b>Co-Leader:</b>	<b>Co-Leader:</b>	<b>Limit:</b> 12 people
<b>Transportation:</b> Van or Personal Car	<b>Driver:</b>	<b>Bus Captain:</b>
<b>Fees:</b> \$27.50	<b>Travel Distance:</b> 55 Miles Round Trip	<b>Travel Time:</b> 75 Min Round Trip

## Dorflinger Glass Museum and Wildlife Sanctuary, Stourbridge Line Scenic Train

The first stop on our adventure is to delve into the exquisite crystal at the [Dorflinger Glass Museum](#). This museum is home to the nation’s largest collection of brilliant Dorflinger glass crystal. It has almost 1,000 pieces of cut, engraved, etched, gilded and enameled crystal. Dorflinger glass was so highly desirable; it graced the tables at the White House for several different presidents. This tour will take about 1 hour.

After getting your fill of the Museum, look for critters while exploring a portion of the tranquil paths of the nearly 600-acre grounds of the [Dorflinger-Suydam Wildlife Sanctuary](#). This sanctuary has preserved the natural beauty and wildlife of northeastern Pennsylvania.

Then enjoy a 2-hour trip to Lackawaxen leaving out of [Stourbridge Scenic Train](#) Line’s Hawley station. Take in the beauty of the Lackawaxen River as it flows toward the Delaware River. Keep your eyes peeled for remains of the Delaware & Hudson Canal and the wildlife that inhabits the river and surrounding areas. Sit back and relax as you ride through the Northern Poconos. The railcars are heated, and restrooms and dining tables are available on the train. The restored historic railroad coaches let you experience how relaxing rail travel was from during the 1920s to the 1950s. Take a seat in one of their two 1920’s “Open Window” coaches and relax as the train makes its way down the tracks. Or have lunch in the dining cars (bring your own).

- Bring spare cash for purchases, food, water, sturdy walking shoes.
- Cost \$27.50, 75 Min/ 55 Mile Round Trip Drivetime, Limit 12 people.

## Vendor Info

**Dorflinger-Suydam Wildlife Sanctuary and Glass Museum:** 570-253-1185 | <http://dorflinger.org/>

- Joan G. Gillner, Executive Director [suydam@ptd.net](mailto:suydam@ptd.net)
- Henry J. Loftus, Jr., Museum Curator [museum1@ptd.net](mailto:museum1@ptd.net)
- Meeting Location: 55 Suydam Drive, Honesdale, PA 18431

**The Stourbridge Scenic Train Line:** 570-470-2697 | [info@thestourbridgeline.net](mailto:info@thestourbridgeline.net) | <https://www.thestourbridgeline.net> |

- Meeting Location: 100 Main Ave, Hawley PA

Google Maps: <https://goo.gl/maps/kJE7veX9PwZrD53b7>

## Fees:

- Dorflinger Glass Museum: Adults: \$5.00
- Stourbridge Scenic Train Line: Adults: \$20 (Includes Tax)
- \$5 + \$20 = \$25 Add 10% Mosaic fees (registration, insurance, transportation and other administration fees) = \$27.50
- Tickets will be pre-paid. Pickup at the ticket counter

## Logistics

8:30 am Depart Camp

- 8:30 am – 9:30 am Travel to From Cedar Lake Camp to Dorflinger Glass Museum / Wildlife Sanctuary
- 9:30 am – 11:30 am Dorflinger Glass Museum
- 11:30 am – 12:45 pm Tour the grounds of Dorflinger Sanctuary
- 12:45 pm – 1:00 pm Travel from Dorflinger Glass Museum to Hawley, PA
- 1:00 pm – 1:30 pm Pick up a meal and/or explore Hawley (eat on the train)
- 1:30 pm – 4:00 pm Lackawaxen Express via The Stourbridge Train Line in Hawley, PA
- 4:00 pm – 4:45 pm Travel from Hawley to Cedar Lake Camp

Note: Keep track of your time. **You MUST be at the train station ON TIME.** The train will not wait for you. Adjust your stay at Dorflinger accordingly.

## Dorflinger Glass Museum

The Dorflinger-Suydam Wildlife Sanctuary acquired its first piece of Dorflinger glass in September 1981 as a gift from Agnes Houth Baisden. Mrs. Baisden gave a Marlboro pattern decanter in memory of her father, Fred Houth, who had worked in the Dorflinger factory. Many glass acquisitions followed and were held in a vault at an area bank as there was no museum to display them.

In 1986, the trustees of the Sanctuary began a campaign led by William Adams and Daniel O’Neill to raise \$150,000 to construct a museum on the Sanctuary grounds.

With the generous support of the community, the fund drive surpassed its goal in the fall of 1987. At that time, noted glass expert Helen N. Barger agreed to donate more than 300 pieces of Dorflinger glass. The trustees named renowned Dorflinger expert Ray LaTournous curator of the budding museum in the winter of 1987. He was charged with the tasks of developing the collection and training volunteers. Construction of the building was completed in 1988. On May 20, 1989, the Dorflinger Glass Museum opened to the public.

In 1991, acting curator Mark Eggenberger installed a display of glass from Dorflinger family members June Hardy and Jane Beers. Henry J. Loftus, Jr., was appointed curator in 1992 and continues in that position today.

With more than 1,000 pieces, the Dorflinger Glass Museum is recognized as having one of the largest displays of Dorflinger glass in the nation. Volunteers donate their time to staff the museum and museum shop. The museum shop is an important source of revenue.

The museum must generate enough revenue each year to support its costs. Admissions and museum shop sales are the primary sources of funds for the museum. The Sanctuary supports the museum by maintaining the building and grounds through the services of General Manager Tom Dein. The museum could not operate on its own without the support of the Sanctuary. Funds are always needed for educational programming, research and to develop and care for the collections.

## Wildlife Sanctuary

Since 1980, the nearly 600-acre grounds of the Dorflinger-Suydam Wildlife Sanctuary have preserved the natural beauty and wildlife of northeastern Pennsylvania.

Mission Statement: In 1980, the Dorflinger-Suydam Wildlife Sanctuary, Inc., was formed to further natural history, conservation, artistic and cultural education and to serve the people as an agency for popular enlightenment, cultural improvement, and scientific progress, recognizing through its programs the essential relationship among the natural, artistic and historical elements of the area.

Although the property of the Sanctuary extends nearly 600 acres, the preservation efforts of the organization move past the boundaries into the village of White Mills. Those efforts began with restoring one of the original seven houses built by Christian Dorflinger as homes of the workers he brought from France. It now serves as a reminder of a worker's life in 1867. Then, under the leadership of the late Wayne W. Stephens, the 1911 White Mills Fire House was saved from demolition and safely moved across the street. The original Dorflinger cutting shop and office, as well as the Lock Tender's House, are privately being saved from ruin, helping to preserve the heritage, White Mills.

Finally, back to this quietly beautiful place called a sanctuary. Miles of well-maintained walking trails clear the mind and refresh the soul.

It all fosters the belief that enduring values are part of a worthwhile way of life that should be preserved for and shared with future generations.

## History of Wildlife Sanctuary

The property that is now known as the Dorflinger-Suydam Wildlife Sanctuary was purchased in 1851 by Captain Aaron Flower, a New York hotelier. At that time, the main building was the farmhouse of a working farm complete with outbuildings, barns, and extensive pastures.

In 1862, Captain Flower sold the property to his friend Christian Dorflinger. Dorflinger, who often visited the farm as a respite from his busy glass manufacturing works in Brooklyn, New York, moved his family permanently to White Mills in the mid-1860s.

In 1865, Christian set about building new glasswork, which soon became the most important glass manufacturing company in the country. In 1873, the Dorflinger family moved to the St. Charles Hotel in the village of White Mills, and the farmhouse was rented to a series of tenants and divided to accommodate several families, including some who worked in the glass factory.

Upon Christian's death in 1915, the farm was bequeathed to his unmarried daughters, Nellie Jane, and Katharine Louise. A third daughter, Mary Elizabeth Dorflinger Suydam, lived at the farm for several years. Some years later, her son Frederick Suydam and his wife, Dorothy Grant, began using the main house as a summer residence.

Frederick died in 1960 and Dorothy in 1979. Her Will stipulated the property was to be used as a wildlife sanctuary in memory of her late husband. June D. Hardy, a great-granddaughter of Christian Dorflinger and cousin of Fred Suydam, was given a life interest in the buildings of the estate. She retained the guest house, but generously relinquished her interest in the other buildings.

In 1980, under the guidance of Roger M. Blough, the Dorflinger-Suydam Wildlife Sanctuary, Inc., was formed to further natural history, conservation, artistic and cultural education and to serve the people as an agency for popular enlightenment, cultural improvement and scientific progress, recognizing through its programs the essential relationship among the natural, artistic and historic elements of the area.

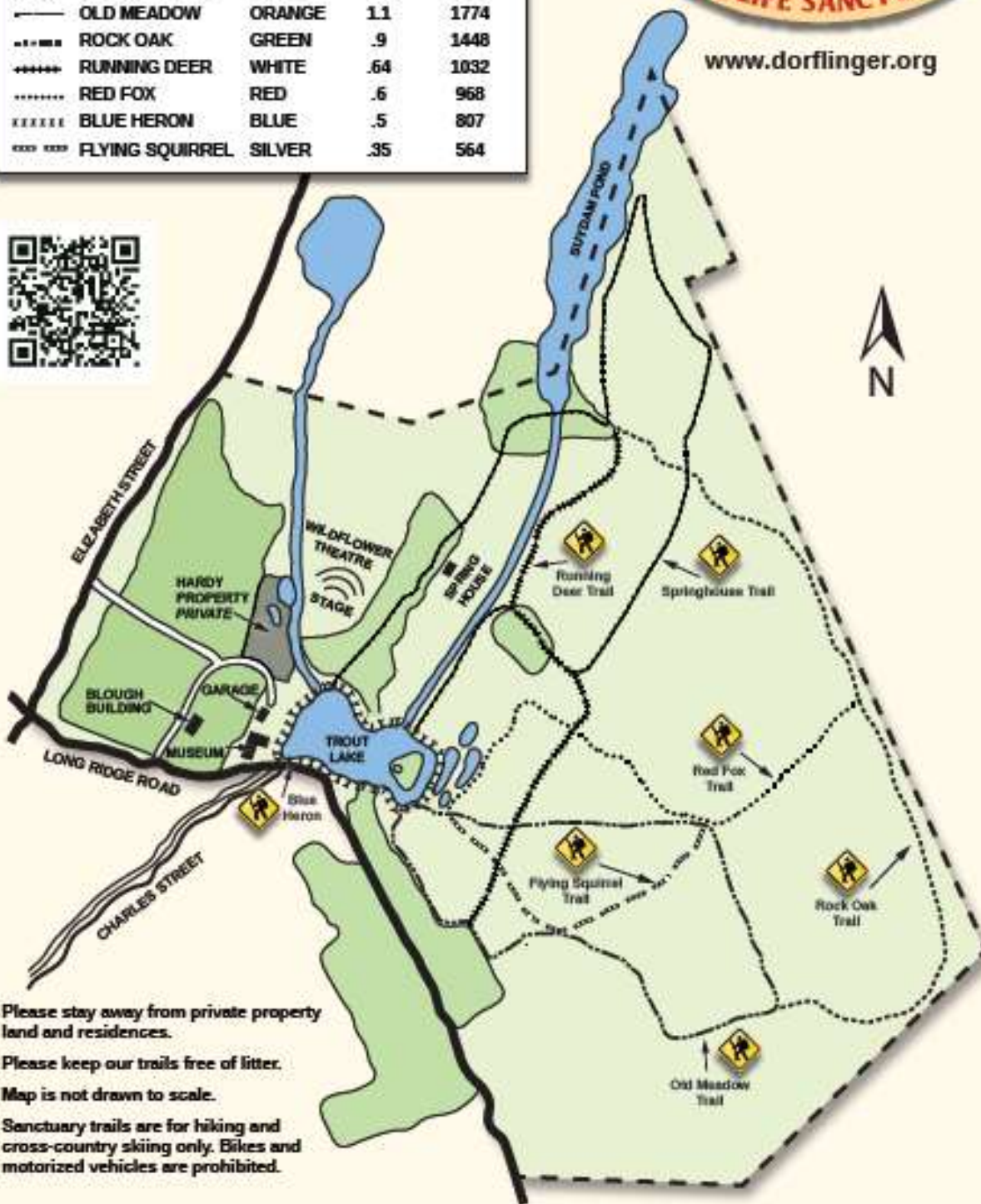
The Suydams lovingly cared for the property for more than 50 years. Today we have the Suydams to thank for the extraordinary setting and beauty of the Sanctuary. The trees they planted decades ago provide us with the serene view we encounter as we walk along the trails. Fred and Dorothy's generous gift of their home to the community will be treasured by visitors well into the next millennium. As we wander through the grounds, let us not forget to stop and say "thank you" to Fred and Dorothy!

## TRAIL LEGEND

TRAIL NAME	BLAZED	MILES	METERS
SPRINGHOUSE	YELLOW	1.4	2258
OLD MEADOW	ORANGE	1.1	1774
ROCK OAK	GREEN	.9	1448
RUNNING DEER	WHITE	.64	1032
RED FOX	RED	.6	968
BLUE HERON	BLUE	.5	807
FLYING SQUIRREL	SILVER	.35	564



[www.dorflinger.org](http://www.dorflinger.org)



Please stay away from private property land and residences.

Please keep our trails free of litter.

Map is not drawn to scale.

Sanctuary trails are for hiking and cross-country skiing only. Bikes and motorized vehicles are prohibited.

## **The Stourbridge Lion and the Birthplace of America's Commercial Railroad**

In 1827 the Delaware and Hudson Canal Company began to investigate the use of the steam engine for traction and locomotive use on its gravity railroad to haul coal from its mines to Honesdale, Pennsylvania, and then by canal to New York City. The gravity railroad operated on a system of inclined planes over which the cars were moved by gravity. This system of connecting differences of elevation using a series of inclined planes was little known and understood in America at that time, though similar systems were in use in Europe.

When the Stourbridge Lion arrived in Honesdale in July 1829, about three miles of wooden track had been laid which crossed the Lackawaxen River on a trestle bridge some thirty feet in height. The rails were of wooden construction, the running surface of which was faced with wrought iron strips secured to the rails with stout wood screws.

The trial run was to take place on the 8th of August 1829. When this became known, crowds of people assembled to witness the event convinced that the Iron Lion would never work. Afraid that the curious contraption would kill any who rode it, no one would take the trial run with Horatio Allen. So, amidst jeers and laughter, he mounted the hissing Lion. The jeers quickly turned to cheers as the Stourbridge Lion crossed the bridge and disappeared. Many thought it would not return; but soon, with Allen at the throttle, and riding backward, the fierce Lion screeched back into Honesdale. The crowd was jubilant. A new era in commercial transportation had begun.

## **FAQs**

Q: When should we arrive at the Station?

A: **We ask passengers to arrive at the Station at least 15 minutes before departure time. The train departs promptly at the advertised time on the ticket.**

Q: Where do we park at Hawley Station

A: If you are using a GPS use 100 Main Ave, Hawley PA address and you will see the station (right across from the Hawley Post Office) and park in the lot next to the station to await the arrival of the train.

Q: Is it assigned seating on the train?

A: Seating on the train is first to come first serve. If you have a group of 10 or more, please contact us so we can try to seat your group together. Note: Mosaic will pre-arrange with the vendor to have the group seated together.

Q: Is the train Handicap Accessible?

A: Our train is limited handicap accessible. Please contact us so we can arrange help or special seating. There are no steps required to board the train at our Honesdale or Hawley station. Steps are required to board and detrain at Lackawaxen. Please let us know if you need to require us to special setup seating.

Q: Are alcoholic beverages allowed on the train?

A: Alcoholic Beverages are not permitted on the train.

Q: Does the train still operate in inclement weather such as snow or rain?

A: Yes, the train still operates during inclement weather. There might be the case during the winter months that the train might be canceled if conditions are too dangerous, we recommend to call us or check our website before traveling.

Q: Do you give refunds?

A: Refunds will not be given unless the railroad cancels the excursion. However, we will exchange your tickets for another excursion. Unused tickets do not expire.



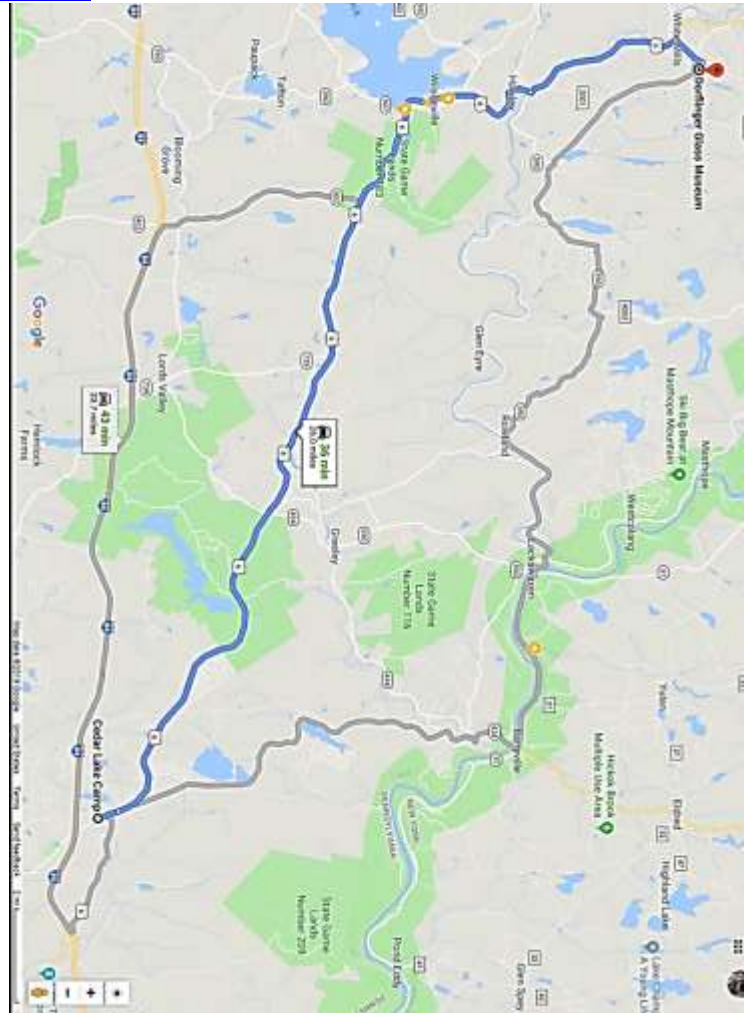
**Round-Trip Directions from Camp to Dorflinger Glass Museum to Stourbridge Scenic Train Line to Camp**

<https://goo.gl/maps/kJE7veX9PwZrD53b7> | <http://mapq.st/2ZA9tSJ>

Total round trip: 1HR 13MIN 51.6MI

Start: Cedar Lake Camp

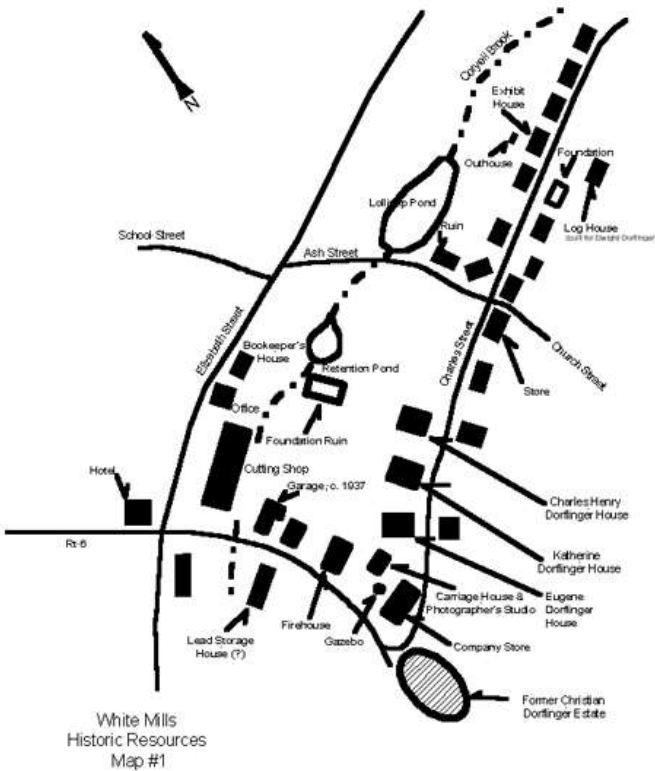
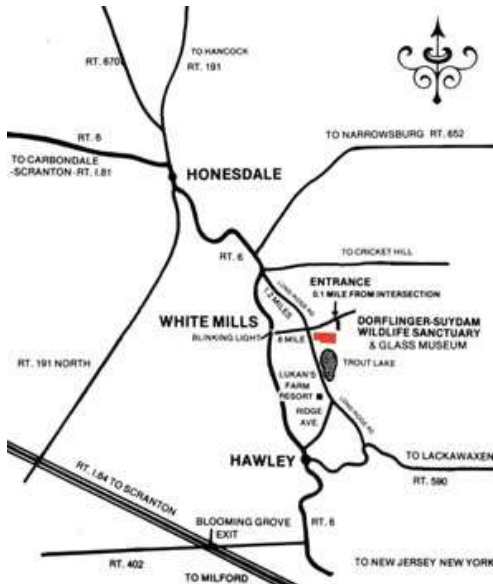
1. Head out of the camp driveway and turn left going northwest on Sawkill Rd toward Bridge Rd. and Rt. 6
2. Turn right onto Bridge Street. Go a short distance to Rt. 6.
  - a. **DO NOT TRY TO TURN ONTO RT. 6 DIRECTLY FROM SAWKILL ROAD. IT IS A VERY DANGEROUS INTERSECTION WITH A BLIND CURVE ON A HILL. TAKE THE SHORT DETOUR ONTO BRIDGE STREET**
3. Turn left onto US-6 W. Continue to follow US-6 W for 20 Miles going past Sawkill Road
  - a. US-6 W is 0.2 miles past Bridge Rd
  - b. Then 20.53 miles 20.82 total miles
4. Turn right onto Main Ave/US-6 W/PA-590.
  - a. Main Ave is just past Penn Ave
  - b. Then .54 miles 21.36 total miles
5. You will come to the town of Hawley. At the Settlers' Inn in Hawley, make a sharp LEFT turn to stay on Route 6 West. Stay on Route 6 to the village of White Mills.
  - a. US-6 W is 0.2 miles past Park Pl
  - b. If you are on Spruce Ave and reach Prospect St, you've gone a little too far
  - c. Then 3.53 miles 24.89 total miles
6. In White Mills, turn RIGHT onto Elizabeth St. at the flashing light and go UP the steep hill for half a mile to the stop sign.
  - a. Elizabeth St is 0.1 miles past Carley Brook Rd
  - b. If you are on Texas Palmyra Hwy and reach Evergreen Ln, you've gone about 0.1 miles too far
  - c. Then 0.75 miles 25.64 total miles
7. Go straight through the intersection.
  - a. Suydam Dr is 0.1 miles past Long Ridge Rd
  - b. If you reach Timmel Ln, you've gone about 0.1 miles too far
  - c. Then 0.16 miles 25.80 total miles
8. Then turn right into the entrance to the Dorflinger-Suydam Wildlife Sanctuary at 55 Suydam Dr, White Mills, PA 18473
  - a. If you reach the end of Suydam Dr you've gone about 0.1 miles too far
  - b. 41.533772, -75.192227



This leg of your trip is: 35minutes · 25.80 miles

### Note about driving directions to Sanctuary and Museum

The village of White Mills lies halfway between Hawley and Honesdale on Route 6. At the blinking light adjacent to the White Mills Hotel in White Mills, turn and go up the steep hill (Elizabeth Street) for 6/10 of a mile to the stop sign at the second blinking light. Continue for 1/10 of a mile to the entrance of the Sanctuary on your right.

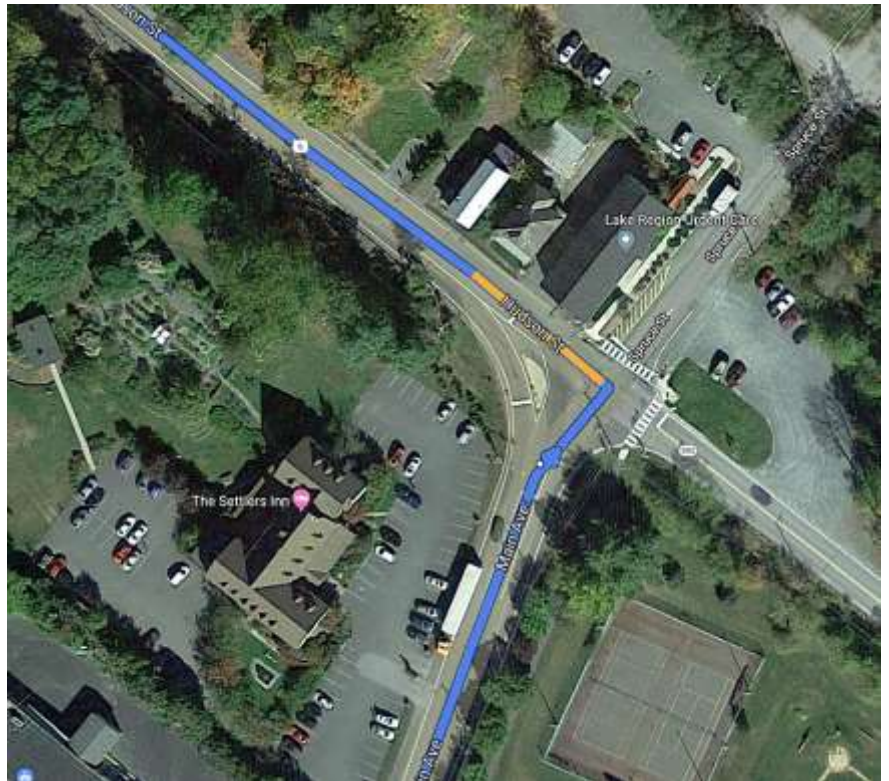


GPS Users: Do not rely on your GPS. There are database errors in some systems, and users are not always directed to the correct location. If you plan to use a GPS or internet ping software, please compare your directions to those found on this page and use the following address.

GPS Address: 55 Suydam Drive, Honesdale, PA 18431 or 41.533772, -75.192227 <http://dorflinger.org/>

**Excerpts from directions above:**

4. You will come to the town of Hawley. At the Settlers' Inn in Hawley, make a sharp LEFT turn to stay on Route 6 West. Stay on Route 6 to the village of White Mills.



6. On Elizabeth Ave, go straight through the intersection. The entrance to the Dorflinger-Suydam Wildlife Sanctuary is on the right. You will see this sign at the intersection with the stop sign.





### Start of next leg of route from Dorflinger Glass Museum to Stourbridge Line Scenic Train

7. Start out going northwest on the driveway towards Elizabeth St.
  - a. Then 0.16 miles 25.96 total miles
8. Turn left onto Elizabeth St.
  - a. Then 0.75 miles 26.72 total miles
9. Turn left onto US-6 E. Continue to follow US-6 E.
  - a. US-6 E is just past Evergreen Ln
  - b. If you are on White Mills Rd and reach Riverside Dr, you've gone about 0.1 miles too far
  - c. Then 3.51 miles 30.23 total miles
10. Turn right onto Main Ave/US-6 E/PA-590 at the light with Settlers Inn and Lake Region Urgent Care.
  - a. Main Ave is 0.1 miles past Ridge Ave
  - b. Then 0.29 miles 30.52 total miles
11. 100 MAIN AVE is on the right.
  - a. Your destination is just past Columbus Ave in between two bridges going over the Lackawaxen River and the Middle Creek
  - b. If you reach River St at the start of the main part of town you've gone a little too far
  - c. Stourbridge Line Scenic Train at 100 Main Ave, Hawley, PA 18428 (41.478012, -75.184660)



This leg of your trip is: 8minutes · 4.71 miles



### Start of next leg of route from Stourbridge Line Scenic Train to Cedar Lake Camp

12. Start out going south on Main Ave/US-6 E/PA-590 toward River St. and going through the main part of town of Hawley.
  - a. Then 0.26 miles 30.78 total miles
13. Turn left onto Spring St/US-6 E/PA-590. Continue to follow US-6 E.
  - a. Then 20.53 miles from the turn onto US-6 - 51.30 total miles
14. Turn slight right onto Sawkill Rd.
  - a. If you are on Grand Army of the Republic Hwy and reach Bridge Rd, you've gone about 0.2 miles too far
  - b. Then 0.29 miles 51.59 total miles
15. Cedar Lake Camp 598 SAWKILL RD (41.346573, -74.888955) is on the right.
  - a. If you reach Honeywell Rd, you've gone about 0.6 miles too far

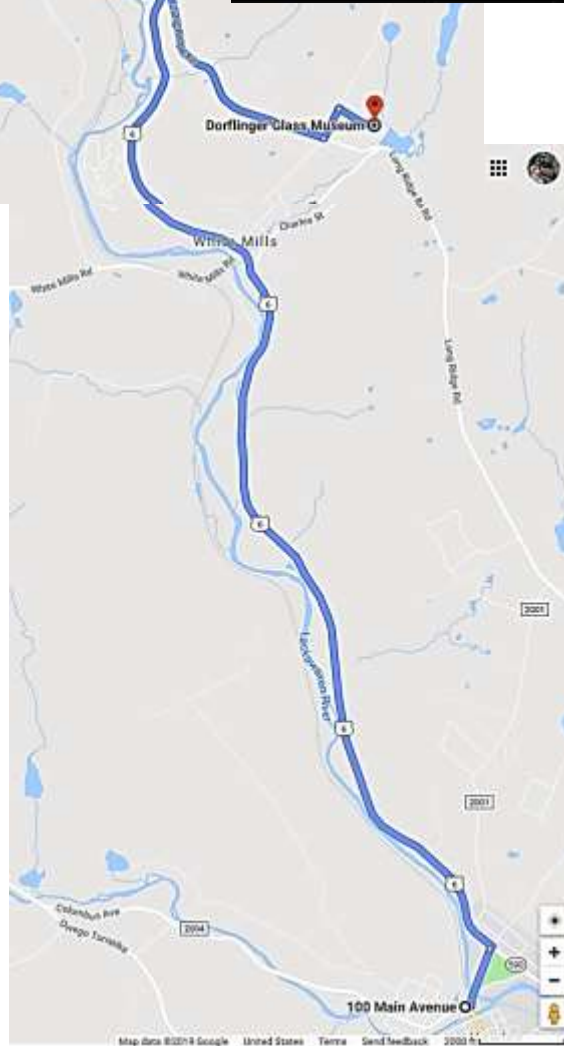
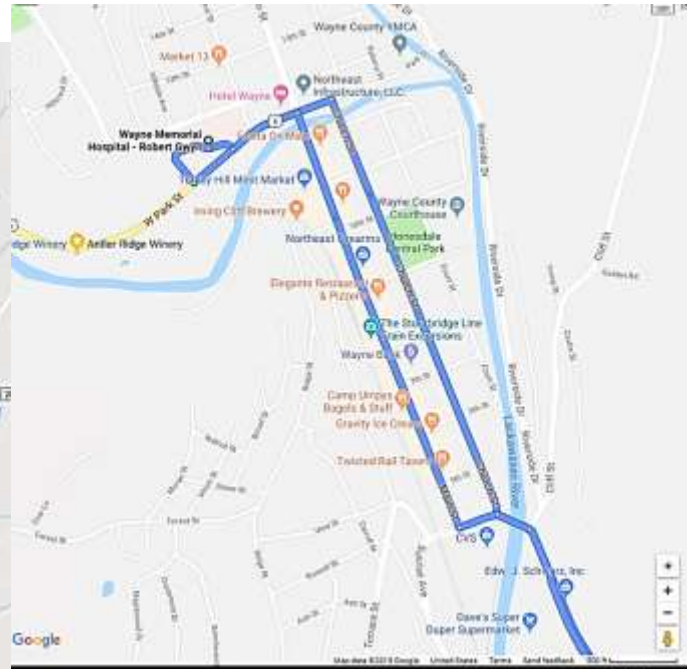
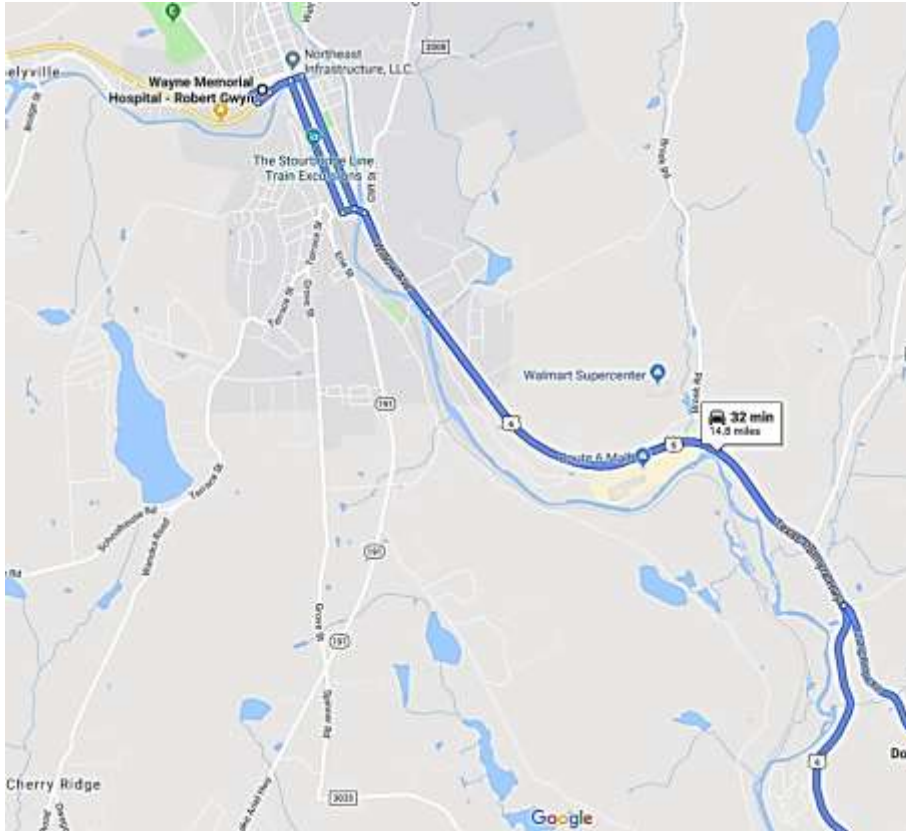
This leg of your trip is: 27minutes · 21.08 miles



JOE 2019 Information Packet for **Dorflinger Glass Museum and Wildlife Sanctuary, Stourbridge Line Scenic Train**

Nearest Hospital: Wayne Memorial Hospital, 1445, 601 Park St, Honesdale, PA 18431 | 570-253-8141

<https://www.wmh.org/wayne-memorial-hospital/emergency-department>



## Nearest Urgent Care:

### [Lake Region Urgent Care](#)

- (570) 390-4545
- Located at 103 Spruce Street, Hawley, PA. 18428 across from the Settlers Inn.
- To find us using GPS Coordinates, use 41.481824 - 75.1824.

